

Save the Children



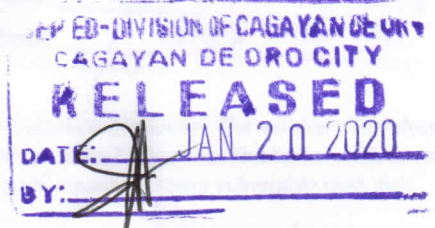
Republic of the Philippines  
**Department of Education**  
REGION X  
DIVISION OF CAGAYAN DE ORO CITY

Office of the Schools Division Superintendent

Date: January 20, 2020

Division Memorandum

No. 51 s. 2020



**IMPLEMENTATION OF ENHANCING CHILD PROTECTION SYSTEM TO KEEP FILIPINO CHILDREN SAFE ONLINE (SaferKidsPH) PROGRAM**



To : **SCHOOL HEAD/CHILD PROTECTION FOCAL PERSON OF THE FOLLOWING SCHOOLS**

Canitoan National School  
Canitoan Elementary School  
Carmen National High School  
Macanhan Elementary School  
Sacred Heart Village Elem. School  
Upper Carmen Elem. School  
West City Central School

Relative to the letter-request from Save the Children, the school heads of the aforesaid schools are hereby enjoined to accommodate the team who will conduct school survey pertaining to online child abuse. The result of the study will serve as a basis on strengthening school mechanisms to protect the children from online threats.

Please see attached schedule of visit for your reference.

Immediate dissemination and compliance of this Memorandum is desired.

  
**CHERRY MAE L. LIMBACO**  
Schools Division Superintendent 

To be indicated in the Perpetual Index under the following subjects:  
CHILD PROTECTION PARTNERSHIPS PROGRAMS



Address: Fr. William F. Masterson Ave., Upper Balulang, Cagayan de Oro City  
Telephone: (08822)-8550048



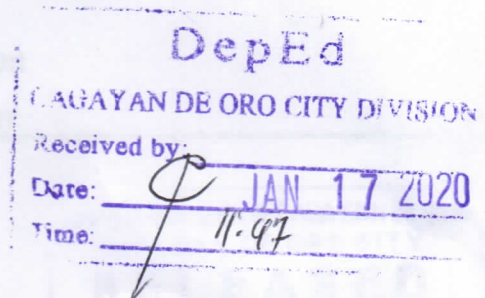
**Save the Children**



**#SAFERKIDSPH**

January 17, 2020

**DR. CHERRY MAE L. LIMBACO, CESO V**  
Schools Division Superintendent  
Division of Cagayan De Oro  
Department of Education



Dear Dr. Limbaco,

Greetings of peace from SaferKidsPH!

Cyberviolence is a serious threat to Filipino children as new technologies put them at risk of online sexual exploitation. The number of children forced to perform sex for live streaming increased, making online child abuse the leading cybercrime in the Philippines. The National Violence Against Children study revealed that one in two children are victims of online violence and boys are equally or more vulnerable than girls.

Save the Children in partnership with UNICEF and The Asia Foundation is implementing a project called **"Enhancing Child Protection System to Keep Filipino Children Safe Online (SaferKidsPH) Program"**, one of the project aims is to strengthen school mechanisms, with a clear sustainability plan, to protect and equip children where they can enjoy the benefits of the internet free from online threats. This project will channel a pathway for an enhanced Child Protection System (CPS) that will deliver children's and families improved and equitable access to, and use of, age-appropriate, gender-sensitive, and high-quality child protection, prevention, and response mechanisms. This will be achieved through multisectoral efforts that will ensure a functioning continuum of services and responses mechanisms on OSEC in schools; and encourage the social participation of students, teachers, parents, school administrators and personnel.

The project commits to partner one school in each target barangays namely Carmen and Canitoan, Hence, a School Selection Survey is proposed to launch in order to have an equal opportunity for the schools to be selected and to have an in-depth understanding on the school's profile on what are the existing strategies and gaps that needs to be addressed.

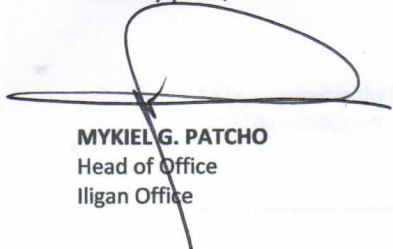
Below are the schools our project team would like to visit for a Survey:

Barangay	Time	Name of School	Interviewee
Canitoan and Carmen January 21, 2020	8:00 AM- 9:00 AM	Canitoan National High School	Principal or Child Protection Focal
	9:00 AM- 10:00 AM	Canitoan Elementary SchoolAnnex	Principal or Child Protection Focal
	10:00 AM- 11:00 AM	Carmen National High School	Principal or Child Protection Focal
	11:00 AM- 12:00 NN	Macanhan Elementary School	Principal or Child Protection Focal
Carmen January 21, 2020	1:00 PM – 2:00 PM	Sacred Heart Village Elementary School	Principal or Child Protection Focal
	2:00 PM- 3:00 PM	Upper Carmen Elementary School	Principal or Child Protection Focal
	3:00 PM – 4:00 PM	West City Central School	Principal or Child Protection Focal

Attached is the sample School Selection Survey Form for your perusal. For further queries, please contact our Community Development Officer, Miss RG Avelyn Geografo at 0956-6931041 or email at [RG.Geografo@savethechildren.org](mailto:RG.Geografo@savethechildren.org).

Thank you so much for your continued support to Save the Children.

Sincerely yours,



**MYKIEL G. PATCHO**  
Head of Office  
Iligan Office



9. Sleep in the same room with a child whom we are working, unless exceptional circumstances apply and previous permission has been obtained from their line manager.

10. Do things for children of a personal nature that they can do themselves.

11. Condone, or participate in, behavior of children which is illegal, unsafe, or abusive.

12. Act in ways intended to shame, humiliate, belittle, or degrade children, or otherwise perpetrate any form of emotional abuse.

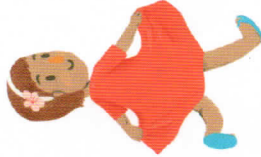


13. Discriminate against, show unfair treatment to particular child/group of children, which in turn exclude others.

14. Spend excessive time alone with children, away from others, in a manner which could be interpreted as inappropriate.

15. Expose a child to inappropriate images, films and websites, including pornography and extreme violence.

16. Place yourself in a position where you are made vulnerable to allegations of misconduct.



**This is not an exhaustive or exclusive list. Staff, volunteers, partners and other representatives should always avoid actions or behaviors that may be misinterpreted as a potential abusive behavior.**



## Report any concern

It is the duty of all Save the Children staff, volunteers, other representatives and staff of partner agencies to report all child safeguarding concerns, this includes specific reports and unconfirmed concerns regarding child abuse or sexual exploitation, especially when the alleged perpetrator is a recognized representative of Save the Children or any of its partner agencies.

**You must follow Save the Children's Reporting Procedure and contact any of the following:**

1. Local child safeguarding focal person
2. National Child Safeguarding Focal Person at +63 917 523 2332
3. ChildSafeguarding.PH@savethechildren.org

The safety and welfare of the child should always come first, and we should seek to ensure that no further damage is done to the child within the duration of the reporting and investigation process. *(Confidentiality is vitally important for both the child/young person and the alleged perpetrator during and after any actions taken within this procedure. It is everyone's responsibility to ensure the security of knowledge, information and records.)*

Let us make Save the Children **safe** for children.

## Save the Children Philippines

4th Floor, Sunnymede IT Center  
1614 Quezon Avenue

Quezon City

[www.savethechildren.org.ph](http://www.savethechildren.org.ph)  
(02) 373-4360

[ChildSafeguarding.PH@savethechildren.org](mailto:ChildSafeguarding.PH@savethechildren.org)



# CHILD SAFEGUARDING A Briefing Leaflet

This briefing leaflet is made to complement child safeguarding orientations. We are aiming to minimize any potential abuse or harm and expect to enable a person to raise any issue or lodge concerns about child abuse and exploitation.





## Keeping children safe from harm

### We Aim To Protect

- Children** - anyone under the age of 18 and those who cannot protect themselves who may be harmed directly or indirectly because of activities we conduct.
- Representatives** - anyone who is a staff member, volunteer, staff or partner agencies, or other representatives of Save the Children.
- Save the Children** - the organization's commitment to child rights.

### What Is Child Safeguarding

Child safeguarding is the set of internal facing, business critical, policies, procedures, and practices that we employ to ensure that Save the Children itself is a child safe organization.

#### It is our method of:

- Ensuring that everyone associated with the organization is aware of and responds appropriately to issues of child abuse and sexual exploitation of children.
- Ensuring that anyone who represents our organization behaves appropriately towards children and never abuses the position of trust that comes with being a member of the Save the Children family
- Assessing and reducing the risks to children that are associated with our activities.

### What Is Child Abuse

Child abuse consists of anything which individuals, institutions or processes do or fail to do while directly harming children or damaging their prospect of a safe and healthy development into adulthood. The forms are:



- Physical abuse** involves the use of violent physical force so as to cause actual or likely physical injury or suffering.
- Emotional abuse** is failure to provide supportive environment and/or pertains to actions that harm their development.
- Sexual abuse** includes all forms of sexual violence, including incest, early and forced marriage, rape and sexual slavery.
- Neglect** is the persistent failure in providing children's needs such as food, water, love and warmth.
- Exploitation** is any actual or attempted abuse of a position of vulnerability, power or trust, for economic or sexual purposes; profiting monetarily, socially or politically from the sexual exploitation of another.

Children can be affected by more than one form of abuse where the experience can result to devastating impact in their lives.

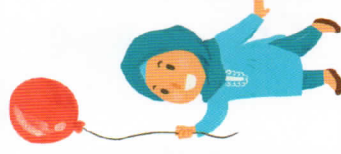


### Our Commitment To Children

- Raise awareness
- Prevent any harm, abuse or threat
- Report any concern
- Respond appropriately

### Staff, partners and other representatives must never, at all times:

- Hit or otherwise physically assault/abuse children.
- Engage in sexual activity or have a sexual relationship with anyone under the age of 18, regardless of the age of majority/consent or custom locally. Mistaken belief in the age of a child is not a defense.
- Develop relationships with children which could in any way be deemed exploitative or abusive.
- Act in ways that may be abusive in anyway or may place a child at risk of abuse.



- Use language, make suggestions or offer advice which is inappropriate, offensive or abusive.
- Behave physically in a manner which is inappropriate or sexually provocative.
- Have a child/children we are working with stay in your house unsupervised, unless exceptional circumstances apply and a permission has been obtained from your line manager.
- Sleep in the same bed with a child with whom we are working.

